

149 N. STONE AVENUE

DOWNTOWN RETAIL AND OFFICE SPACE



Location: 149 N. Stone Avenue, adjacent to the Main Library and the charming Little Poca Cosa.

Sizes:

Ground floor -	± 1,700 RSF.
2nd Floor -	4,204 RSF.
3rd floor -	4,204 RSF.
4th floor -	<u>4,204 RSF.</u>
Total combined -	± 14,312 RSF.

Lease Rate: \$18/RSF, modified gross. Tenant is responsible for utilities, janitorial, and increases in operating costs over the base year.

Available: Immediately.

Description: Located in the heart of the Stone Avenue office/financial district.

Buzz Isaacson

520.323.5151

buzz.isaacson@cbre.com

Ike Isaacson

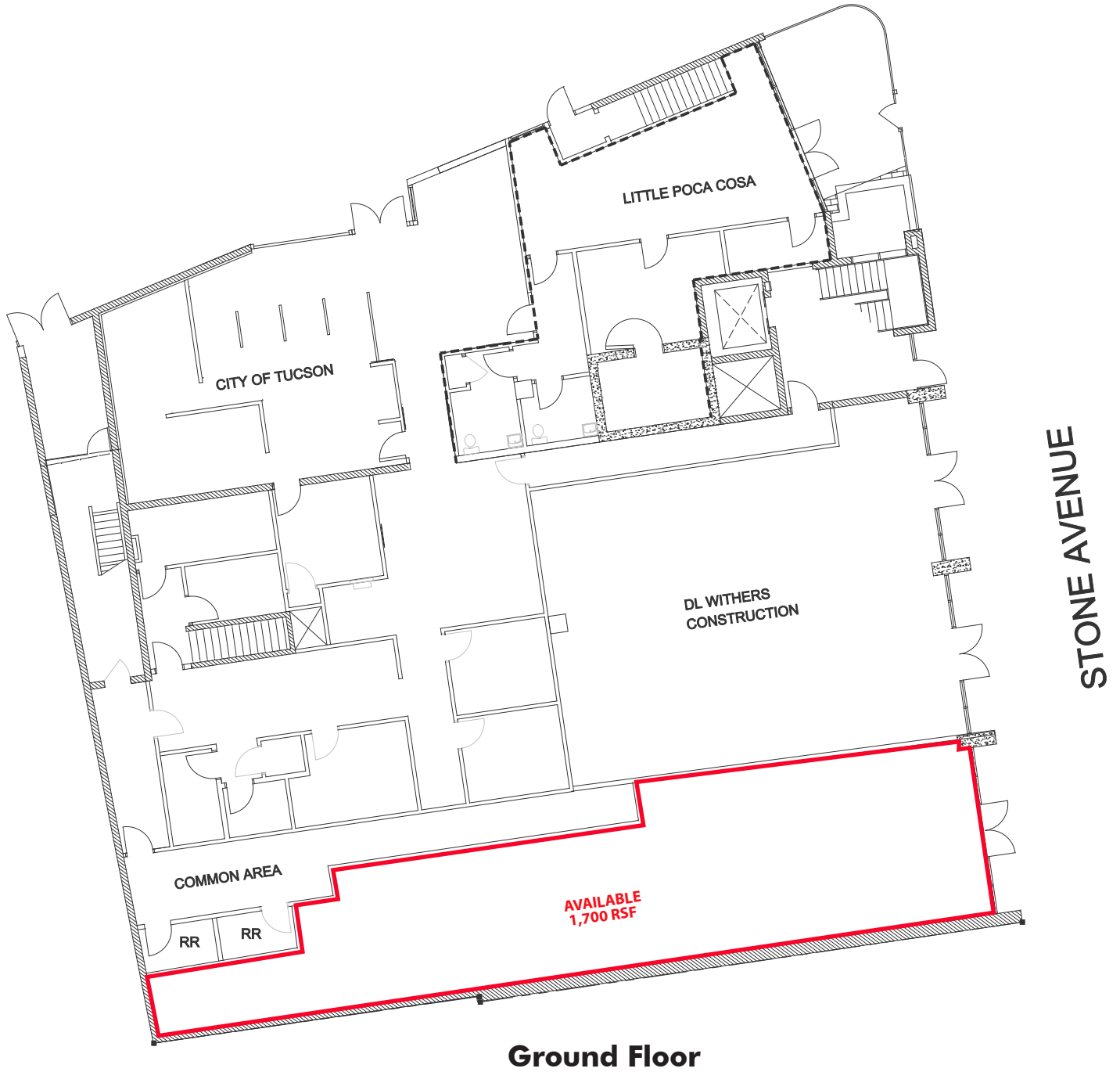
520.323.5141

ike.isaacson@cbre.com

CBRE
CB RICHARD ELLIS

149 N. STONE AVENUE

DOWNTOWN RETAIL AND OFFICE SPACE



Buzz Isaacson

520.323.5151

buzz.isaacson@cbre.com

Ike Isaacson

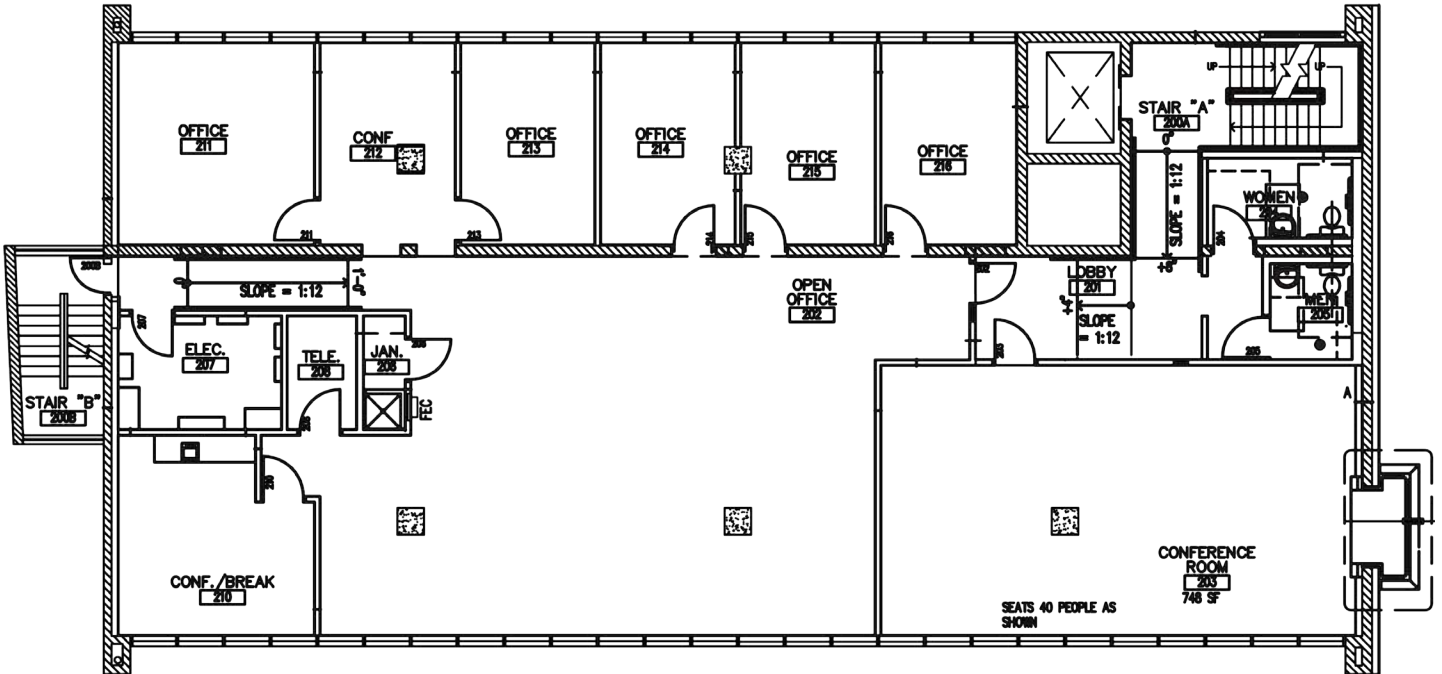
520.323.5141

ike.isaacson@cbre.com

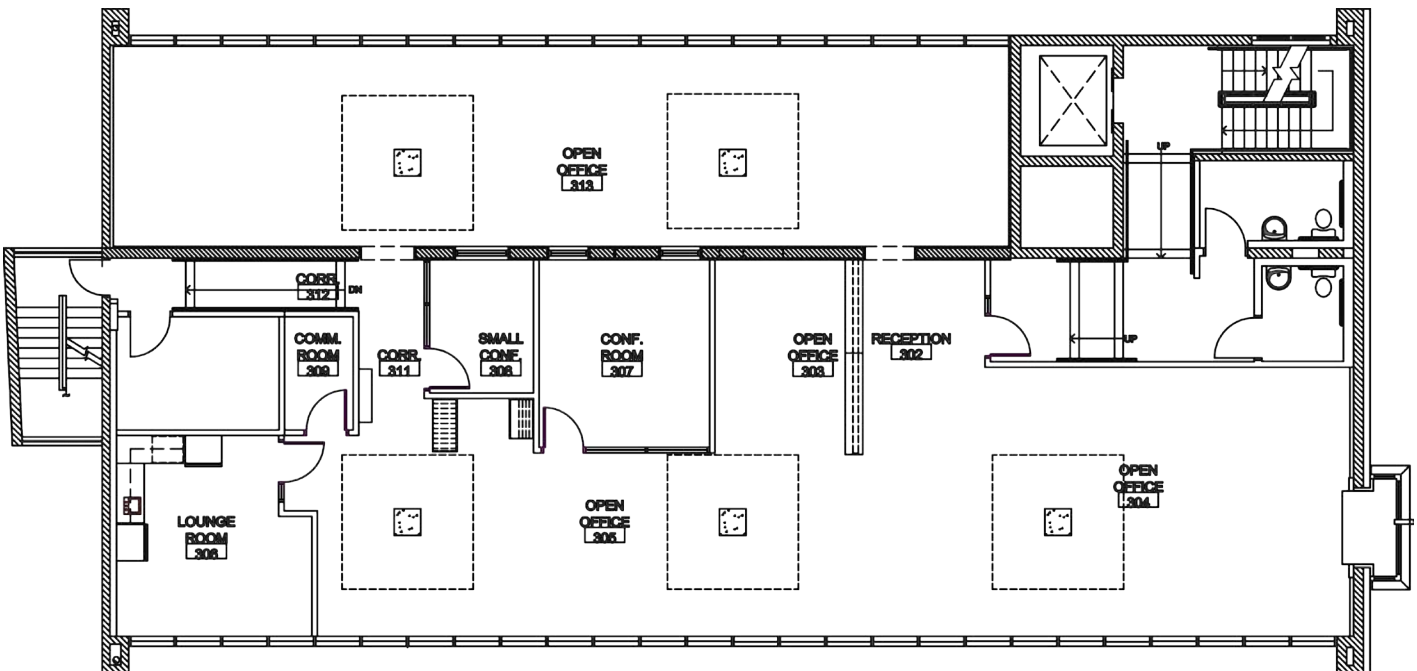
CBRE
CB RICHARD ELLIS

149 N. STONE AVENUE

DOWNTOWN RETAIL AND OFFICE SPACE



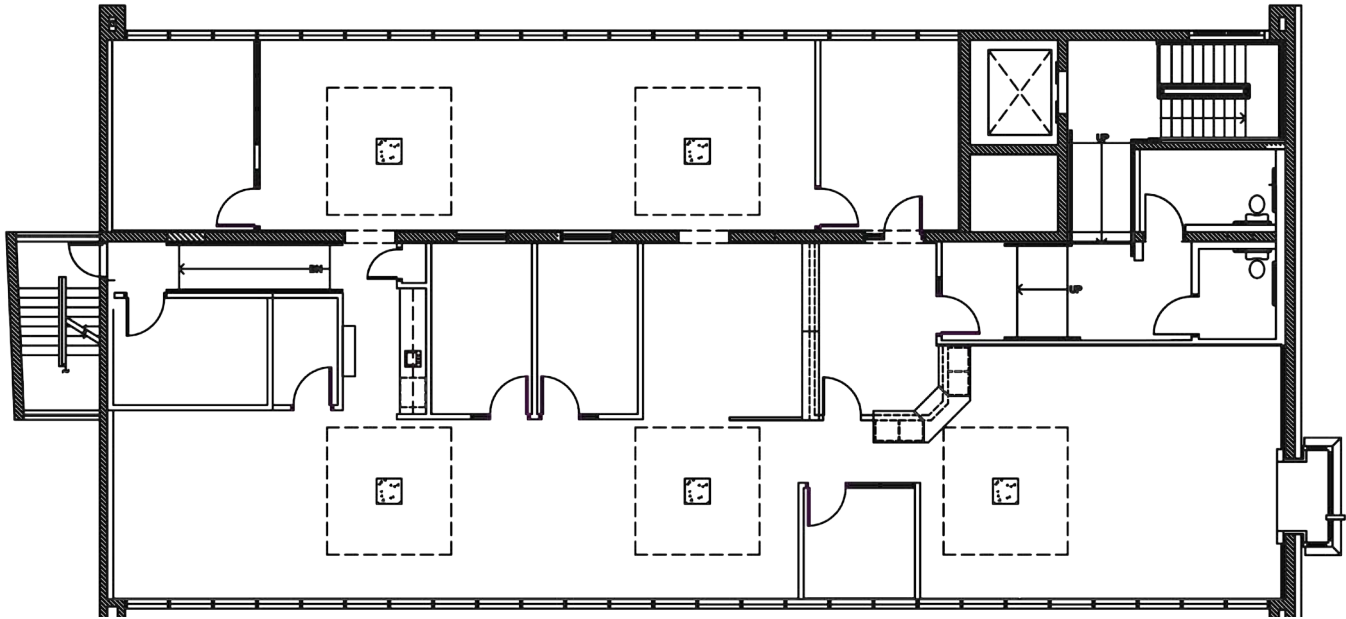
2nd Floor



3rd Floor

149 N. STONE AVENUE

DOWNTOWN RETAIL AND OFFICE SPACE



4th Floor

Buzz Isaacson

520.323.5151

buzz.isaacson@cbre.com

Ike Isaacson

520.323.5141

ike.isaacson@cbre.com

CB Richard Ellis | 3719 North Campbell Avenue | Tucson, AZ 85719 | www.cbre.com/ike.isaacson

© 2011 CB Richard Ellis, Inc. This information has been obtained from sources believed reliable. We have not verified it and make no guarantee, warranty or representation about it. Any projections, opinions, assumptions or estimates used are for example only and do not represent the current or future performance of the property. You and your advisors should conduct a careful, independent investigation of the property to determine to your satisfaction the suitability of the property for your needs.

CBRE
CB RICHARD ELLIS