

FOR
Lease

High Image
Office Warehouse

6363 South Country Club Road, #121 Tucson, Arizona



TOTAL AREA: 17,200 SF (Divisible)

OFFICE SPACE: 6,000

CEILING HEIGHT: 22'

ZONING: I - 1

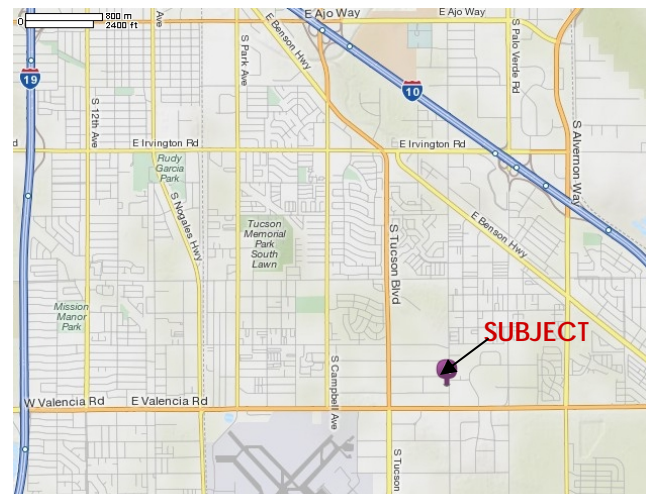
LOADING: 1 Dock and 2 Grade

POWER: 200amp, 480 volt, 3 Phase

SPACE AMENITIES:

- Tucson International Airport — 2 Miles
- Sprinklered

LEASE RATE: \$0.63/SF/Month MG



ROBERT GLASER, SIOR, CCIM

520.546.2707 Office

Email: rglaser@picor.com

PICOR Commercial Real Estate Services
1100 N. Wilmot Road, Ste. 200
Tucson, AZ 85712
520.748.7100 Office
520.546.2799 Fax

PICOR.com



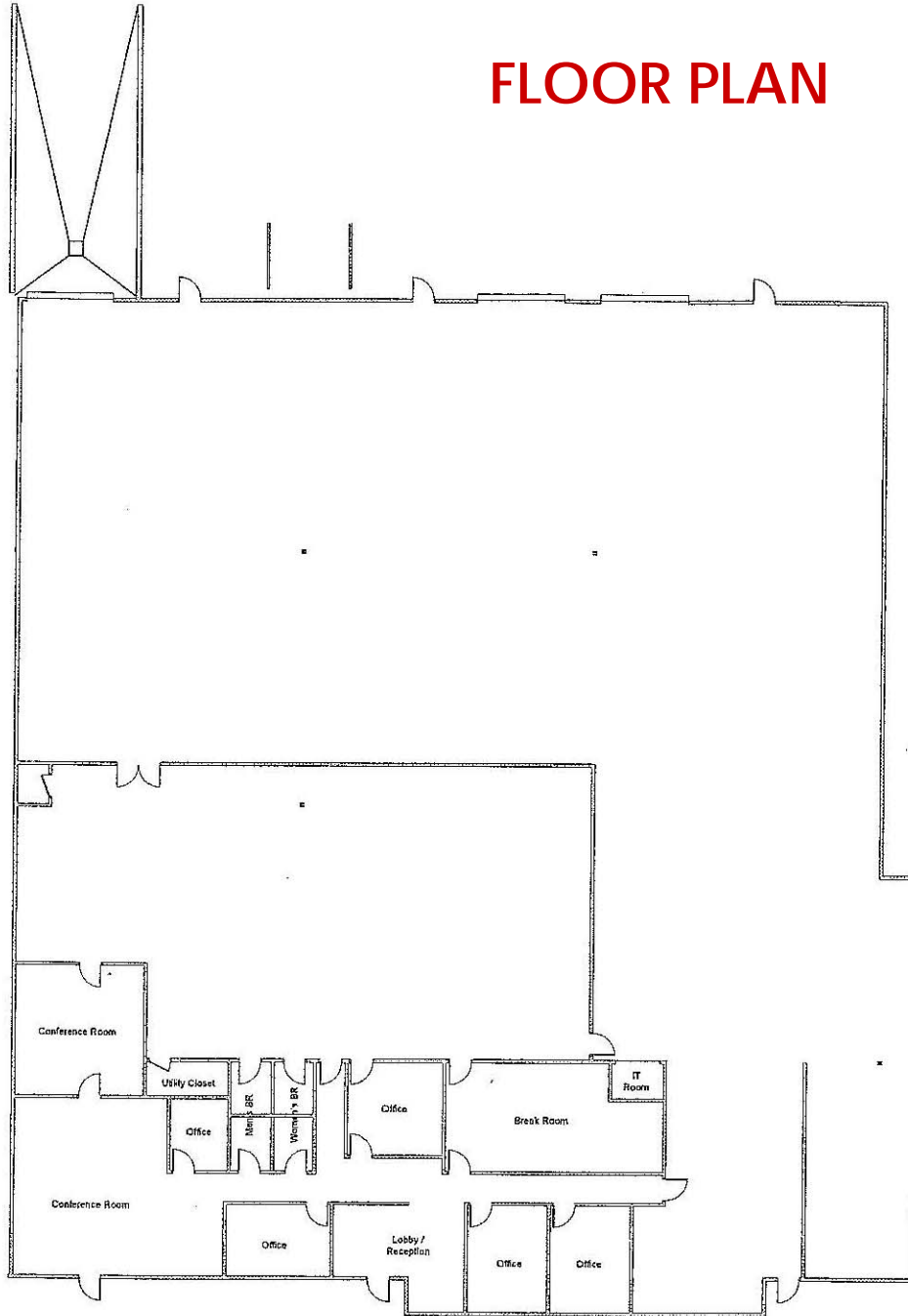
No warranty or representation, express or implied, is made as to the accuracy of the information contained herein, and same is submitted subject to errors, omissions, change of price, rental or other conditions, withdrawal without notice, and to any specific listing conditions, imposed by our principals.

FOR
Lease

High Image
Office Warehouse

6363 South Country Club Road, #121
Tucson, Arizona

FLOOR PLAN



PICOR Commercial Real Estate Services
1100 N. Wilmot Road, Ste. 200
Tucson, AZ 85712
520.748.7100 Office
520.546.2799 Fax

PICOR.com



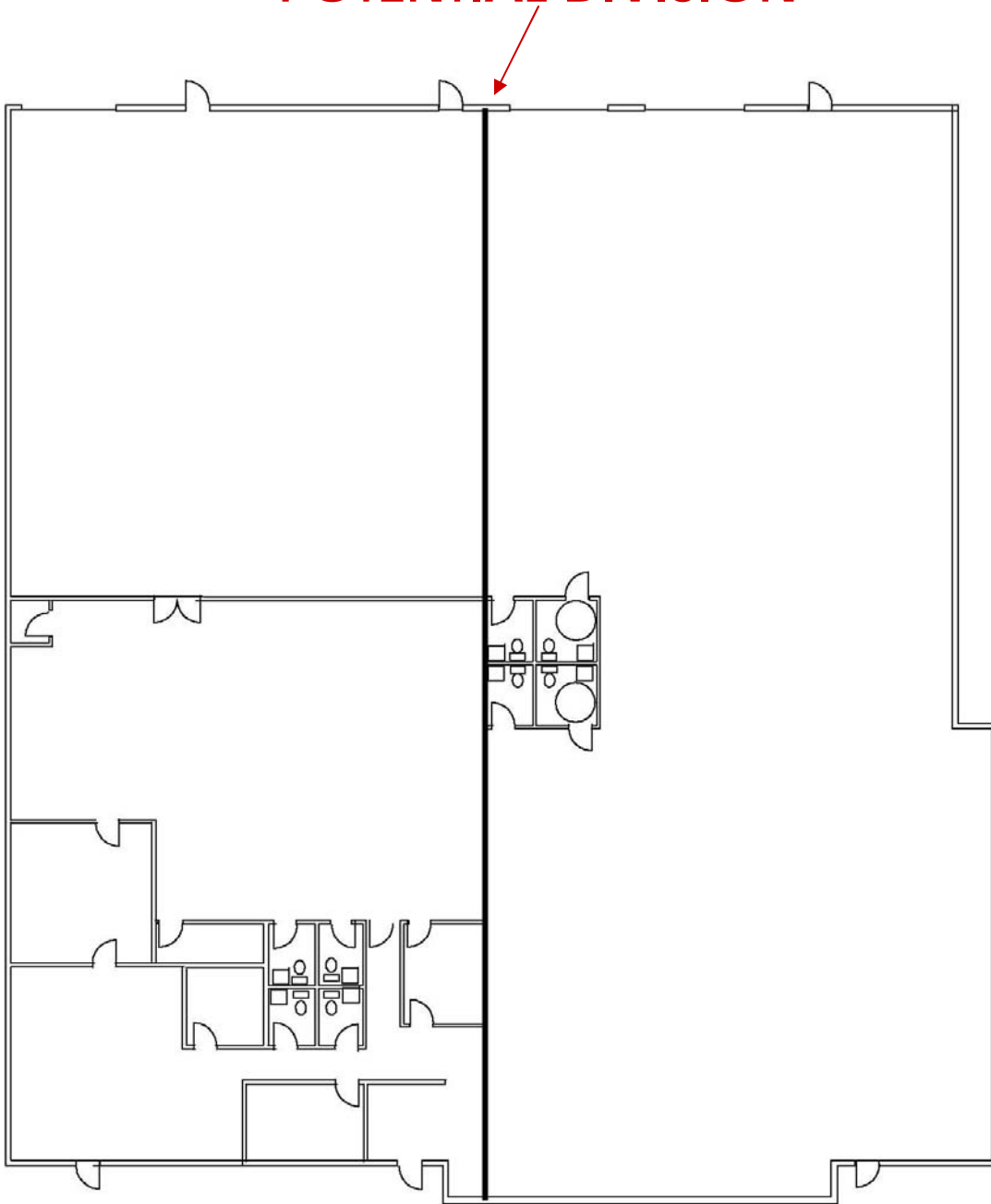
No warranty or representation, express or implied, is made as to the accuracy of the information contained herein, and same is submitted subject to errors, omissions, change of price, rental or other conditions, withdrawal without notice, and to any specific listing conditions, imposed by our principals.

FOR
Lease

High Image
Office Warehouse

6363 South Country Club Road, #121
Tucson, Arizona

POTENTIAL DIVISION



PICOR Commercial Real Estate Services
1100 N. Wilmot Road, Ste. 200
Tucson, AZ 85712
520.748.7100 Office
520.546.2799 Fax

PICOR.com



**CUSHMAN &
WAKEFIELD**



PICOR

INDEPENDENTLY OWNED AND OPERATED

No warranty or representation, express or implied, is made as to the accuracy of the information contained herein, and same is submitted subject to errors, omissions, change of price, rental or other conditions, withdrawal without notice, and to any specific listing conditions, imposed by our principals.